

How do I add custom asset types?

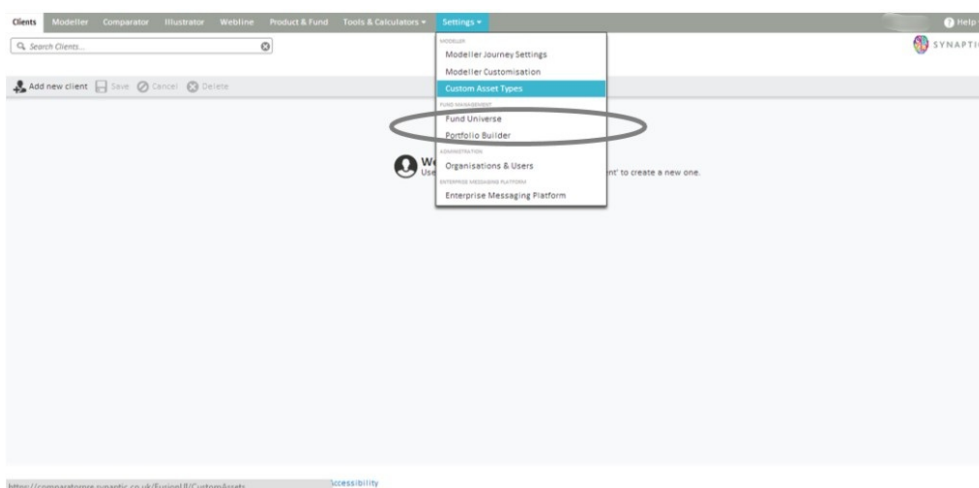
Last Modified on 23/01/2018 3:38 pm GMT

From here you can create custom asset types for the organisation (and children) or view the types that have been inherited from the parent organisation.

You would need to create asset types for the user in order that they exist before the user can create an asset of this type for a client.

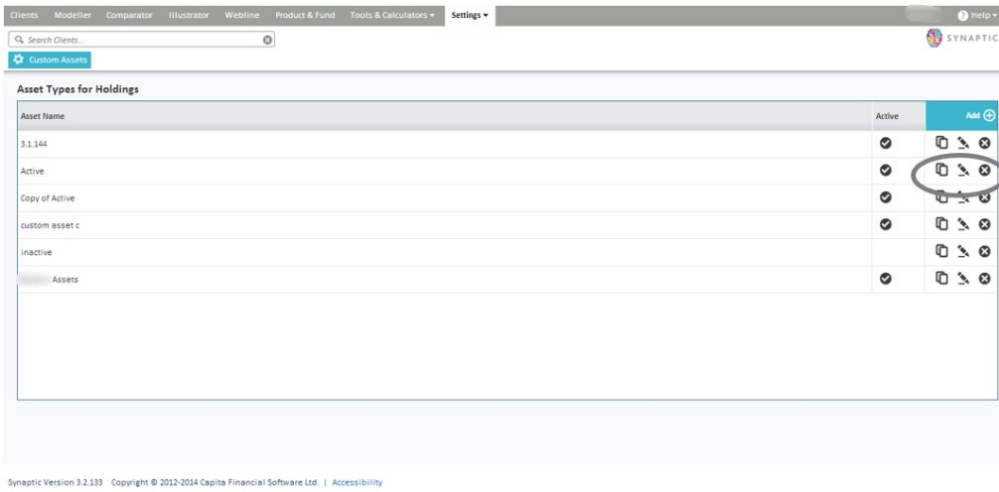
In order for you to do this, the organisation must have to relevant permission.

Go to **Settings** and select **Custom Asset Types** to start reviewing the custom asset types for the organisation. The screen will list all the custom asset types you have created or inherited and their status.

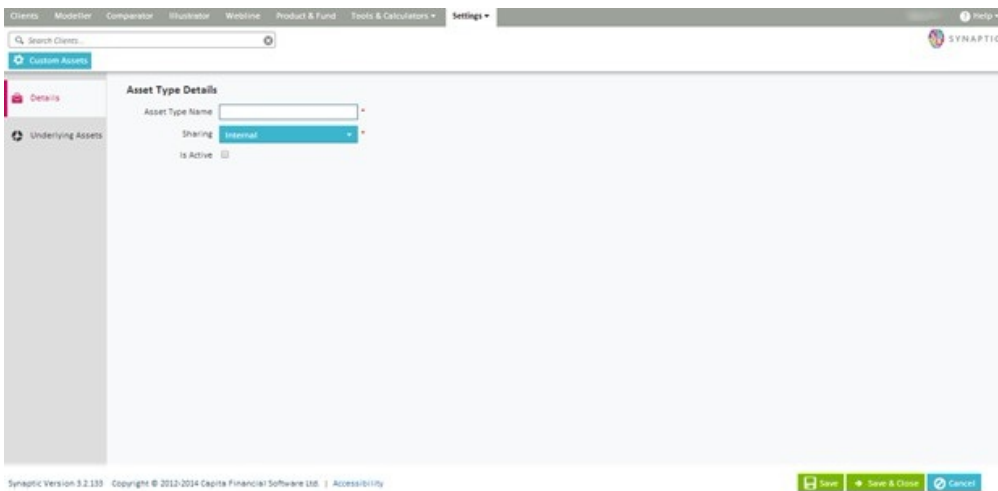


Click the edit pen to edit existing types, the two page symbol to duplicate or the view icon to see inherited types.

Click on the **add** button to add a new type.

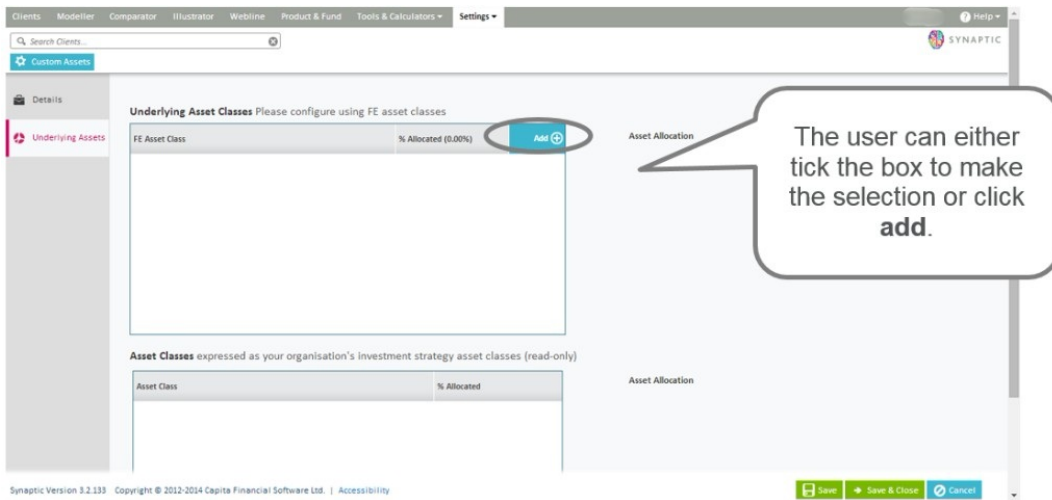


The user will then be given the opportunity to complete the asset type details, by allocating an asset name, make it active and set the sharing options, the choices either being for internal or public use.

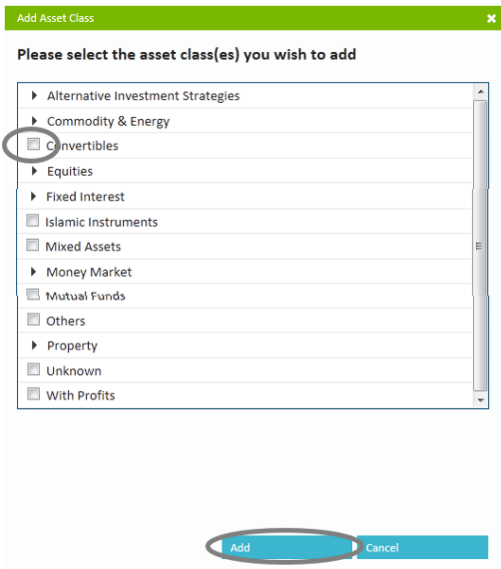


Define what this asset type is made of in terms of asset classes.

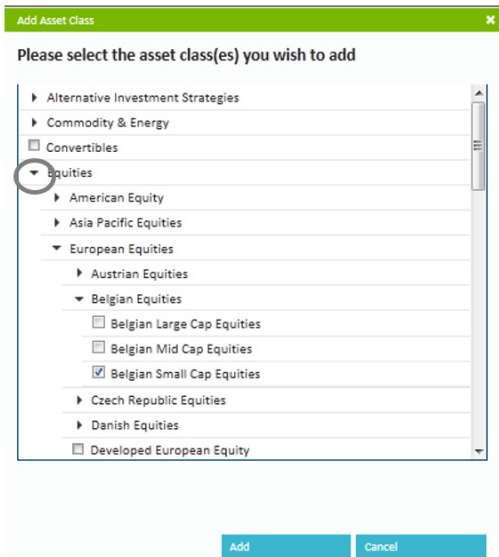
The top box will allow for the selection from Financial Express (FE) asset classes. These are the asset classes that the fund data is supplied in. Click **Add** to view the tree of possible classes to select from.



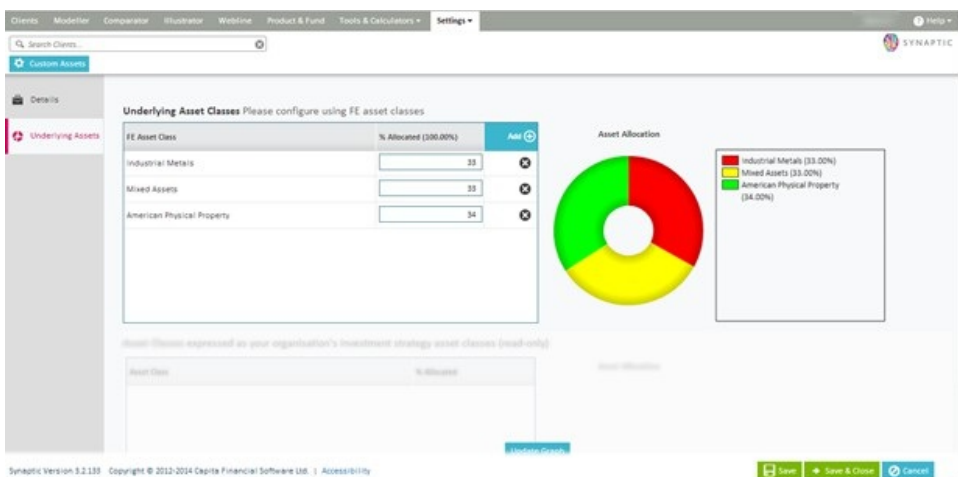
The user will need to select the asset classes they wish to add.



Or click on the arrow by the side of the selection and continue to make the selection until the user arrives at a tick box required.



Once the asset classes have been selected and added, the user will be able to add the % weightings in each class.



If the user scrolls down to the bottom of the screen and selects **update graph**, the system will return the asset classes deployed in the investment strategy which the user will see when they create an asset of this type for their client.

Clients Modeller Comparator Illustrator Webline Product & Fund Tools & Calculators Settings Help

Search Clients

Custom Assets

Details

Underlying Assets

Underlying Asset Classes

Please configure using FE asset classes

FE Asset Class	% Allocated (100.00%)	Add
Industrial Metals	33	✕
Mixed Assets	33	✕
American Physical Property	34	✕

Asset Allocation

- Industrial Metals (33.00%)
- Mixed Assets (33.00%)
- American Physical Property (34.00%)

Asset Classes expressed as your organisation's investment strategy asset classes (read-only)

Asset Class	% Allocated
Commodities	33
Global Property	34
Mixed Asset	33

Asset Allocation

- Commodities (33.00%)
- Global Property (34.00%)
- Mixed Asset (33.00%)

Save Save & Close Cancel

Synaptic Version 3.2.133 Copyright © 2012-2014 Capita Financial Software Ltd. | Accessibility

When completed click the **Save & Close** button