

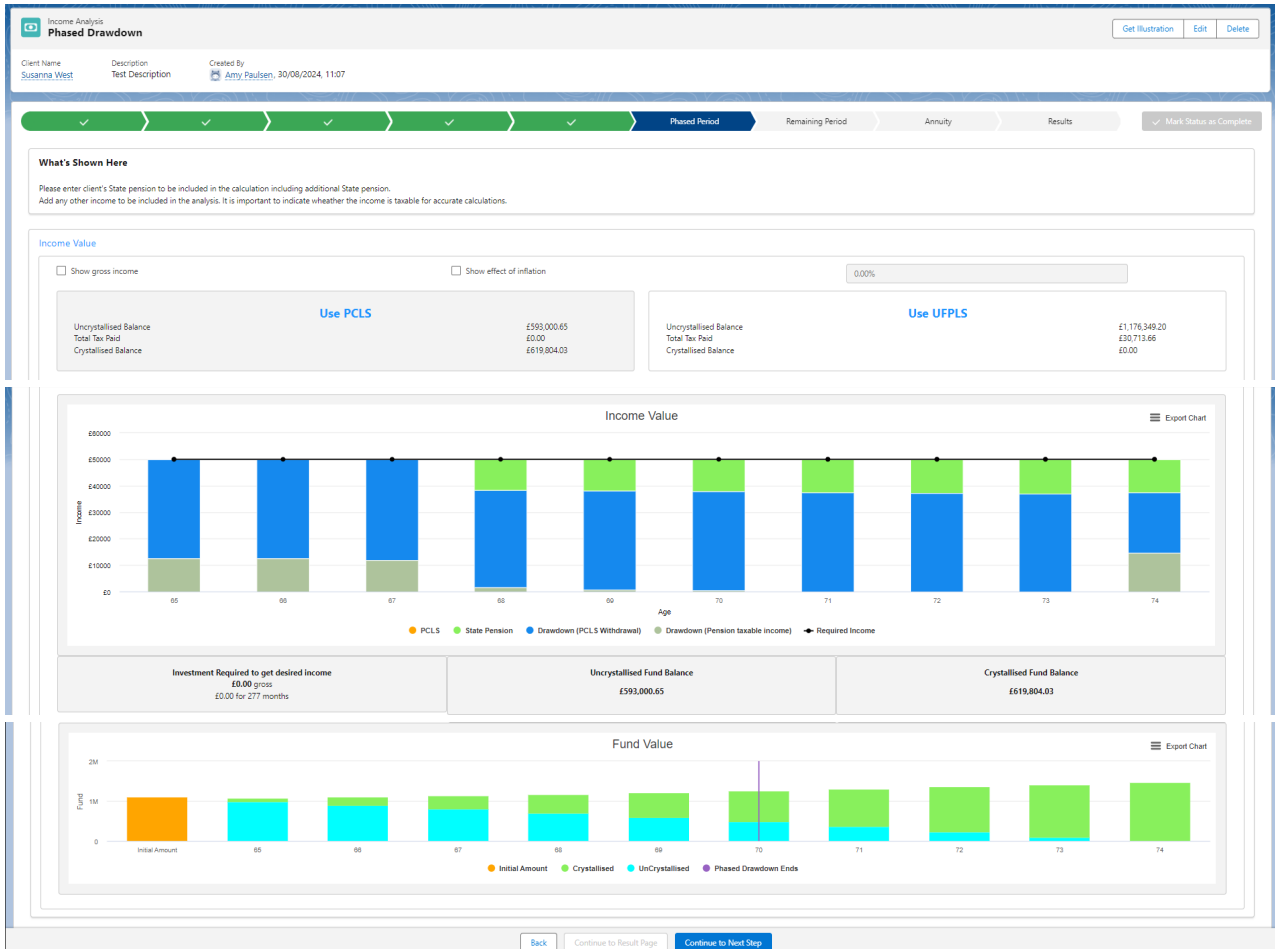
# Income Analysis - Phased Period

Last Modified on 04/10/2024 3:02 pm BST

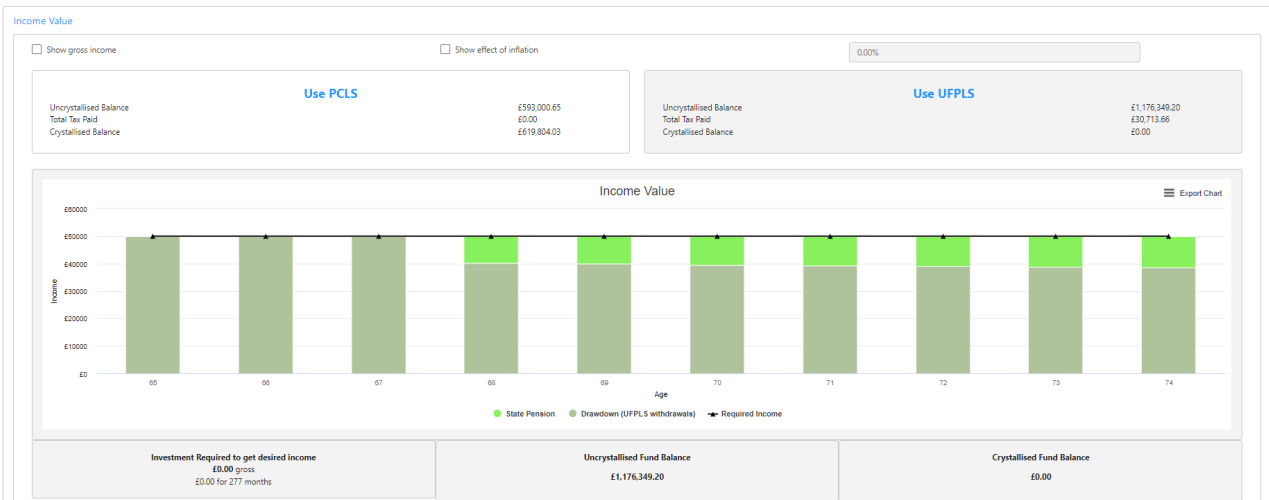
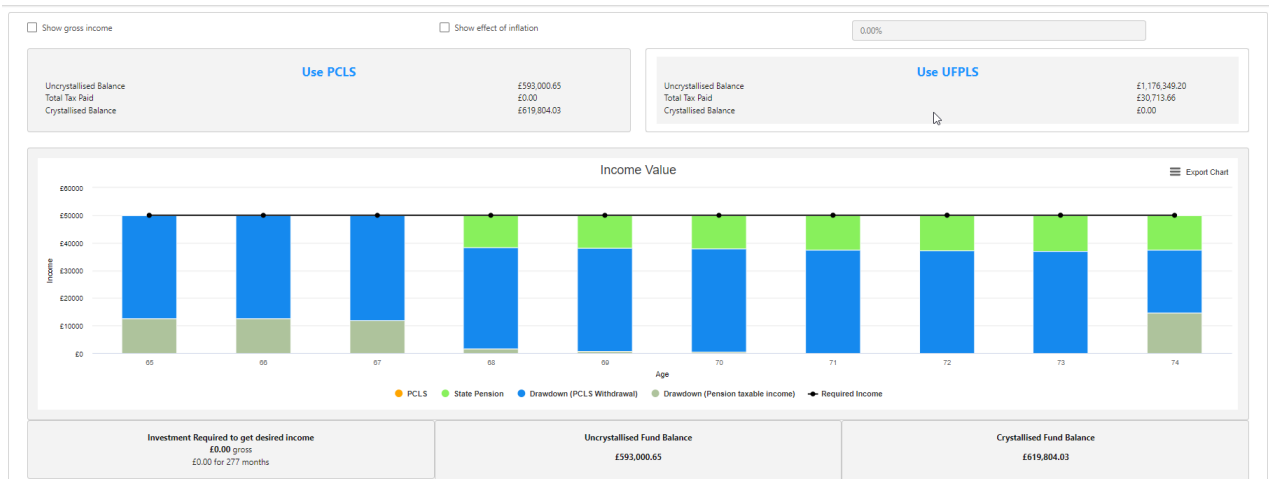
This article is a continuation of [Income Analysis - Other Incomes](#)

This first set of results are for the first Phased Period Only.

Choose which Income Strategy you would like to use in the first phased period. In this example, the phased period is from age 65 to 74years old.



PCLS is automatically selected, switch between the two strategies to compare:



Select the strategy that you would like to take forward and click **Continue to Next Step**